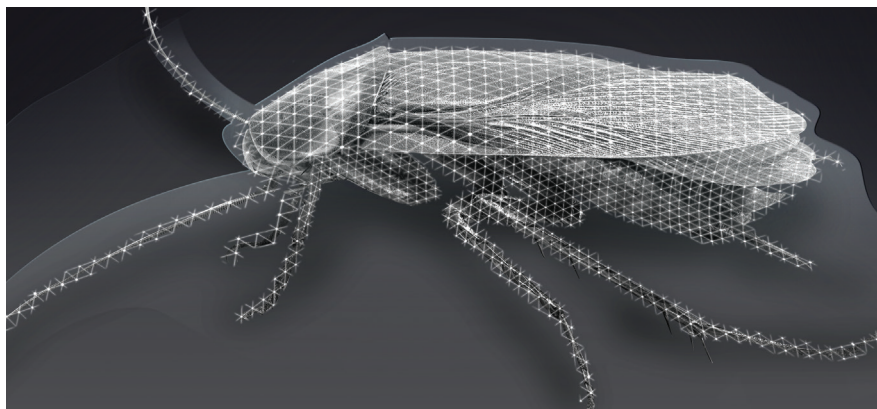




**READ
BEFORE USE**



Active Ingredient: Pyrethrins

Insecticide Group 3A

Active Ingredient per Gallon 0.845 lbs.

Mode of Action: sodium chain disrupter

Use Rate: See label for use rates

Packaging 32 fl oz (946.4ml)

- **LN 1% Py with 3D-IPNS** is a multi-purpose insecticide for the control of insects and certain targeted arachnids (mites, etc.) including many public health pests.
- **LN 1% Py with 3D-IPNS** is formulated with patent pending know-how which when mixed with natural pyrethrum provides unusual activity by helping to keep the insect in the treated zone and delivery of the active to the pest.
- Chrysanthemum Plant Extract.
- For Both Food and Non-Food Uses.
- For Plants, Animals, and Structures.



Easy To Use Liquid formulation Targeting Insects: Effective on a large number of listed insects including.

Plants Pests: Spider Mites; White Flies, Psylla, Spotted Lantern Fly

Public Health Pests: Bed Bugs, Cockroaches, House Flies

Additional Pests on Animals: Northern Fowl Mites, Darkling Beetles

Application Instructions (Consult Label Before Applying):

**BEST RESULTS ARE ACHIEVED BY BUFFERING WATER
TO PH RANGE OF 5 to 7.5**

Compressed air / hydraulic sprayers:

For surface applications apply as a course, wet spray at the specified dilution rates listed below. For crack and crevice applications, place the tip of the applicator at or into the crack, crevice, or void to be treated apply product at the rate of one second per foot. Apply in such a manner as to limit dripping and runoff on surfaces and plants.

Hose end sprayers:

Dilute according to the specific directions for use. Shake sprayer to fully mix the product.

Currently approved label can be found on the EPA Web Site: [LN 1% Py approved Label](#)

Low-volume sprayers:

Dilute according to dilutions table on approved label.

Used as a tank mix:

This product can be tank mixed with other insecticides and acaricides. It is the pesticide user's responsibility to ensure that all products are registered for the intended use. Read and follow the applicable restrictions and limitations and directions for use on all product labels involved in tank mixing. Users must follow the most restrictive directions for use and precautionary statements of each product in the tank mixture. Do not exceed label application rates as if mixing stand alone. Add **1% PY WITH 3D-IPNS** at the specified dilution rate to the mix containing the other product(s). Prior to tank mixing, conduct a compatibility test using the proper proportions of products and water to ensure the physical compatibility of the mixture. This product cannot be mixed with any product with label prohibitions against such mixing.

Personal protective equipment (ppe)

Materials that are chemical-resistant to this product are listed below:

Applicators and other handlers who may be exposed to the dilute and / or concentrate through application



Long-sleeved shirt
and pants



Chemical-resistant
gloves made of Barrier
Laminate,
Nitrile Rubber > 14 mils



Shoes plus socks



Protective eyewear
(goggles, face shield,
or safety glasses).

User safety requirements:

Users should: Remove clothing immediately if pesticide gets inside. Then wash thoroughly and put on clean clothing. Remove PPE immediately after handling this product. Wash the outside of gloves before removing. As soon as possible, wash thoroughly and change into clean clothing.

